

GOODWOOD SUSTAINABILITY

2023 ANNUAL REPORT



—





FOREWORD

What we do at Goodwood has been inspired not only by the estate's sporting heritage but also by the beautiful, unspoilt setting in the South Downs, a landscape interwoven with farmland, woodland, parkland and Sussex chalkland.

The estate's very existence is rooted in centuries of stewardship, protecting its social and ecological value, but in a year when climate change impacted affected the daily life of people around the world, we acknowledge the need to progress apace towards carbon neutrality.

From woodland management plans to protect our trees and support native wildlife, to the running of our own private water network, we continuously continually seek ways to improve, innovate and transform sustainable practices across the estate, and to support those beyond our boundaries in their own efforts. We have also made great strides forward in balancing the impact of our various businesses. The reduction of carbon use and the drive for towards alternative energy sources are at the heart of our discussions, plans and operations, as well as the content we share across our global channels, which have been used this year to amplify the work of those championing sustainable practices, such as working together with Sebastian Vettel this year at the Festival of Speed this year.

Our collaboration with long-standing partner, Rolls-Royce Motor Cars, has allowed us to extend our strategy for enhancing biodiversity across the

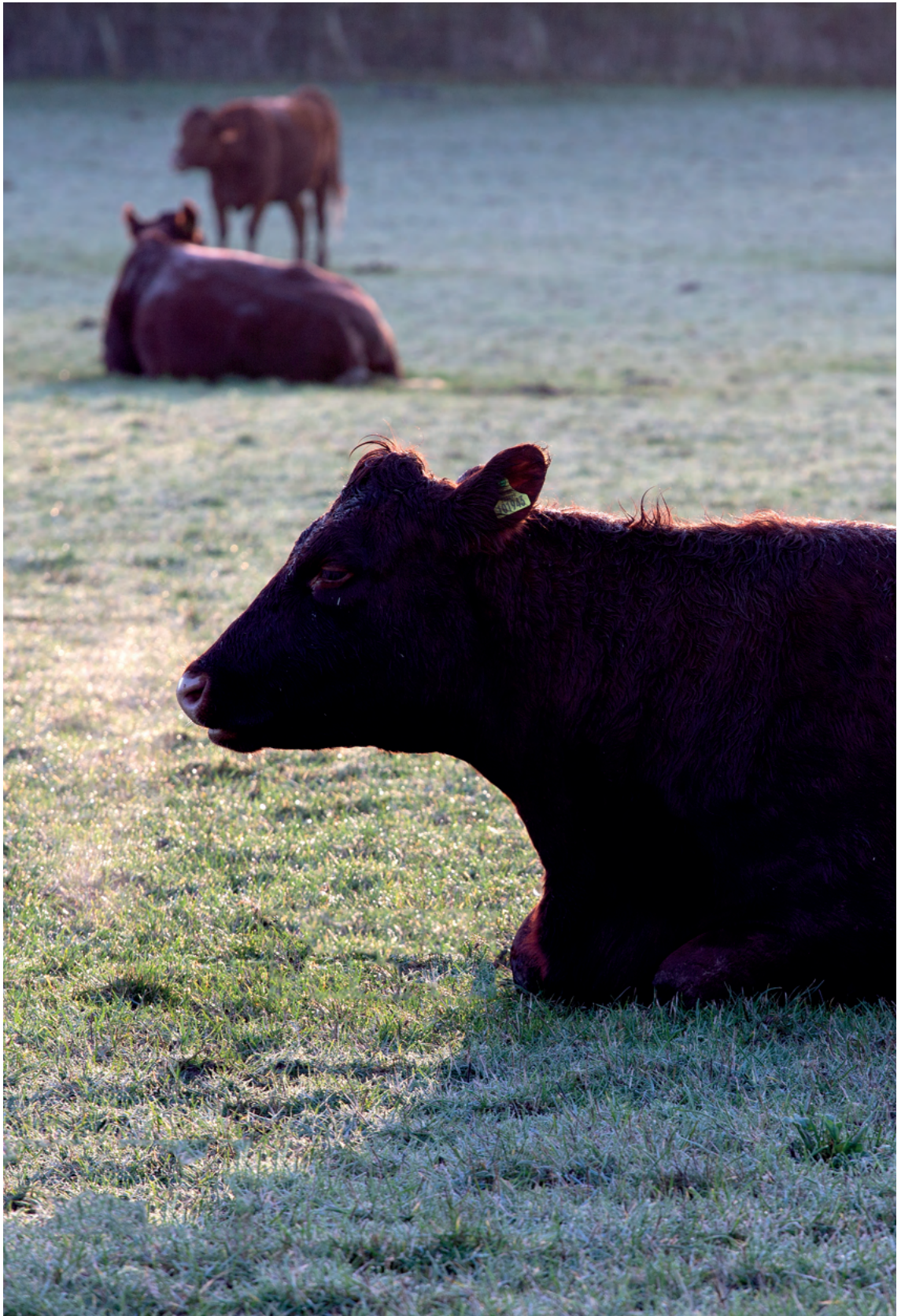
estate and support projects that drive local enjoyment of this incredible natural environment.

We also relished the opportunity to work closely with both local and international experts within their fields of expertise, including One Carbon World, South Downs National Park, Sussex Wildlife Trust, Natural England, Forestry England and Historic England.

Sadly, 2023 was also to be the year we lost Her Grace Susan, Duchess of Richmond at the age of 90. A trailblazer of Britain's organic movement since the 1950s, we remember her pioneering work in environmental protection across the estate, but perhaps most profoundly and within Goodwood's organic farmland.

This edition of the Goodwood Sustainability Report provides a rare moment to acknowledge the difficulties and celebrate the successes in striving to become as sustainable as we possibly can. By pursuing bold ambitions around sustainability and eco-friendly processes, the estate will continue to meet the challenges of climate change and the biodiversity crisis with creativity and innovation, ensuring that future generations can cherish Goodwood as we all do today.

THE DUKE AND DUCHESS OF RICHMOND AND GORDON



Executive Summary |

Page 8

Sustainability Highlights |

Page 10

ONE

Natural Capital |

Page 12

TWO

Carbon |

Page 26

THREE

Water |

Page 36

FOUR

Business |

Page 42

FIVE

Social |

Page 52

SIX

Resources and Waste |

Page 68

2024 and beyond |

Page 74

Estate Assets |

Page 77

References |

Page 79



EXECUTIVE SUMMARY

As well as hosting the internationally famous Festival of Speed, Glorious Goodwood Festival and Goodwood Revival – three of the most highly anticipated events in the British sporting and social calendar – Goodwood operates a diverse portfolio of over 25 businesses across 11,000 acres, including one of the largest organic lowland farms in England; a historic Motor Circuit and Aerodrome; Goodwood Racecourse; two championship golf courses; one of the oldest cricket grounds in the country; the award-winning sustainable restaurant Farmer, Butcher, Chef; The Kennels members’ clubhouse; The Goodwood Hotel and Hound Lodge, a private 10-bedroom retreat, as well as the magnificent Goodwood House. Within the estate boundaries also sit a host of residential buildings, tenant farmland, farm buildings and offices.

This annual sustainability report covers six of the most relevant focus areas of the Goodwood estate operations, informed by the UN Sustainable Development Goals. The infographic overleaf illustrates headline assets, the bedrock of our sustainable operations, which underpins our strategy and the actions detailed in the chapters that follow.

Natural Capital

The resources and natural environmental assets of the estate, including plant and animal life.

Carbon

The measurement of our carbon footprint, our use of green energy and alternative sustainable fuels.

Water

The sustainable management of water across the estate, including boreholes and aquifers, as well as management of our manmade supply and irrigation systems

Business

Proactive decisions, partnerships and improvements made by Goodwood, including management of supply chains, procurement and internal relationships between stakeholders.

Social

Initiatives and the impact that Goodwood has directly on its people, the local community, charities and local educational projects.

Resources and Waste

Resource management and creative ways to prolong the life cycle of materials in use.

NATURAL CAPITAL



41,000
trees planted

15
new dormouse boxes installed



12
new wildlife habitats built

18
rare species found through
ecology surveys



1
pond creation

CARBON

Emissions from event generators
REDUCED BY 87%
by switching to 100% HVO



5.575 HOURS
of charging time for electric
vehicles

2,333 MWh
energy generated by the biomass

167,027 MWh
solar energy produced

100%
electric fleet introduced to
The Goodwood Hotel

WATER

1
pop-up irrigation system
installed at the racecourse



1.6KM
of primary private network
supply replaced

1
compost toilet installed

3
water butts installed

BUSINESS



67%

of event food used locally sourced ingredients

384

trees planted with Train Hugger partnership

50%

of event suppliers from within 50 miles

17

apprenticeships introduced across the estate businesses

The Downs Golf Course voted

TOP 100

most sustainable golf courses in Europe

Economic contribution of

£323M

annually

SOCIAL

£480.426

raised for charity

76%

event staff came from within a 25-mile radius



3000

school children visited the Goodwood Education Trust centre

Launched

GOODWOOD
MENTAL HEALTH
FIRST AIDERS
and

GOODWOOD
CONNECTED



1 MILE

of new permissive path opened from Halnaker to Strettington

RESOURCES AND WASTE

Renewable cup scheme saved

900,000

single use plastic cups

250KG

event food waste donated to UK harvest



200 TONNES

of estate waste converted to compost for onsite use

1.082 TCO2E

saved through WEEE recycling

48

toner cartridges recycled

ONE

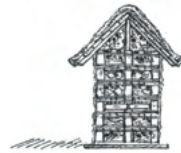
NATURAL CAPITAL

It is the world's stock of natural assets – including geology, soil, air, water and living things – that make human life possible. Across nearly 11,000 acres, the Goodwood Estate features a mix of managed gardens, recreational areas, farmland, woodland, waterways and hedgerows, all of which play an important carbon sequestration, environmental, economic and recreational role, both locally and nationally. Therefore, we continue to work within and evolve a sound land management strategy to provide, enhance and protect these assets and ecosystem services for future generations.



41,000
trees planted

15
new dormouse boxes installed



12
new wildlife habitats built



1
pond creation

18
rare species found through ecology surveys



Wildlife

Habitats and Surveys

For many years, Goodwood has been working with Brent Lodge Bird and Wildlife Trust in nearby Sidlesham, providing a slow-release programme for injured or orphaned young birds. The estate provides the last step of the recovery process, housing the birds in a secure enclosure in the woods for a few days while they slowly adjust to their surroundings before being released back into the wild. We have released a number of birds of prey – tawny owls and kestrels – along with smaller birds such as blackbirds, starlings, robins, wrens, goldfinch, sparrows and a nuthatch.

Having followed up on last year's survey, our ornithologist has since discovered an active cetti's warbler nest. Only 135 nests have been recorded in the UK by 2021. To put this into perspective, a Dartford warbler, the UK's only other resident (non-migratory) warbler, has a total of 803 UK nest records. In 2021, there were just 23 cetti's warbler nest records for the UK, and 21 in 2022, none of which were found in Sussex, making this particular discovery very special to the estate. During the same survey, a greenfinch with 4 hatched young was also found, another rare find.

A new stand-alone owl box – beautifully crafted by estate-based carpentry firm, Built by Artizans, using Goodwood timber – has been installed at a height of 3m within the forestry yard. Three further barn owl boxes have been installed across the estate to encourage nesting and breeding, addressing the dwindling numbers of the species in recent years due to the proliferation of new housing estates and the resulting loss of habitat and increase in pollution. Goodwood's in-house painter and avid bird enthusiast, Mike Collins took a barn owl course, equipping him with the skills to advise the estate on

how best to support and monitor barn owls.

Goodwood's forestry manager also enjoyed a sighting of a juvenile cuckoo in August, currently a Red List species in the 2021 UK Conservation Status Report and a rare sight in this part of the country.

Goodwood supported this year's RSPB Garden Watch, with the support of residents on the estate. Equipped with the information gathered within this survey about the species and location of birds, we can restore existing habitats and build new areas for birds to forage, nest and nurture their young. Next year's results will allow for comparison to see how the population is evolving and gauge the impact of our efforts. Results shown in the associated graph (*fig.1*) overleaf.

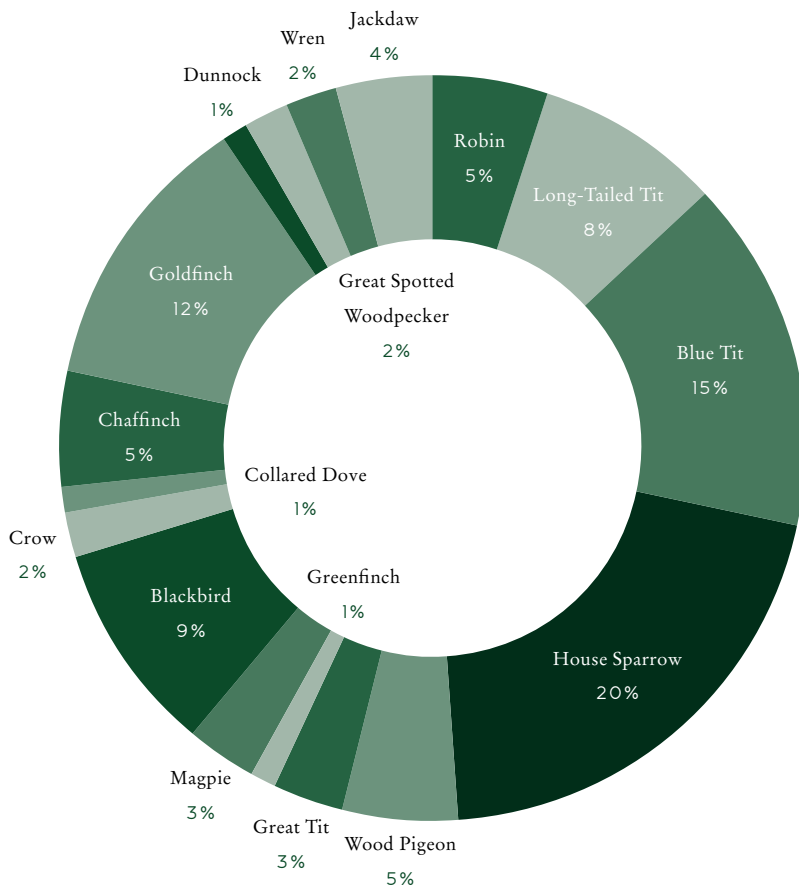
The Motor Circuit welcomed its first family of blue tits to one of its newly constructed bird boxes, made entirely from recycled materials by the grounds team.

The team also introduced a total of 12 new bug hotels to the site in celebration of the Royal Entomological Society's National Insect Week in June. These mini sanctuaries, created by the Goodwood Grounds Team during the winter months using waste wood, leaves and branches, provide a safe haven for insects and minibeasts, supporting biodiversity and vital pollination processes.

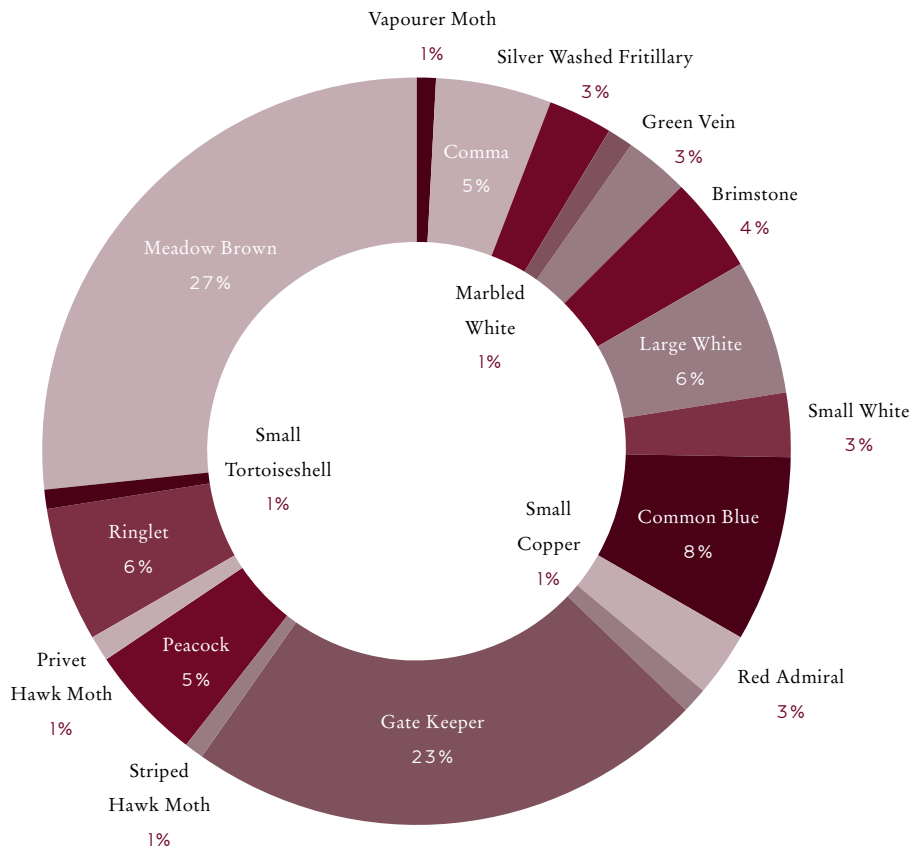
The Goodwood Education Trust taught students of the Forest School how to make a variety of wildlife boxes, all of which are now in situ in their educational site at Seeley Copse.

Staff and residents across the Goodwood Estate also participated in Butterfly Conservation's 'The Big Butterfly Count'. Over five days between 14 July and 6 August, the team dedicated 15 minutes a day to surveying butterflies, collecting valuable insights. A total of 132 butterflies and 19 different species were

Goodwood Garden Bird Survey
(fg.1)



Goodwood Butterfly Count
(fg.2)



recorded (*fg.2*), including the iconic common blue and the radiant peacock. The data collected will guide our efforts to enhance existing habitats and create new ones to support the butterfly population.

Within a new area of estate woodland, staff from our sustainability partner, Rolls-Royce Motor Cars hand-crafted and installed 15 dormouse boxes, expanding the area of data collection used to monitor the dormouse population at Goodwood.

Back in 2016, Goodwood became a receptor site for a reptile translocation, required as mitigation for the reptiles displaced by a local housing development at Lower Graylingwell in Chichester. In 2023, an ecology survey of the site investigated population densities and highlighted recommendations on how best to manage the site to benefit the reptiles. The survey visits identified a peak count of 10 adult slow worms and one adult common lizard present using the site.

An ecology survey has been conducted on Goodwood's woodland park, the Valdoe (a nature recovery site), examining the stock of invertebrates, reptiles and plants as well as tracking the winter and summer nesting habits of birds. Our breeding bird survey results established that five different Red Listed bird species were found to be dwelling at the site.

The invertebrate surveys identified nine conservation status species; one of which, the phoenix fly, is in the Section 41 list of species of principal importance for the conservation of biodiversity in England.

The West Weald Fungus Recording Group carried out a fungus foray in the same region during the Autumn and found a total of 66 species.

The Goodwood pigs have also been hard at work over the last few months of the year, transforming the estate's landscape and creating a new pond. The project, supported by Rolls-Royce Motor Cars, Portsmouth Water and South Downs National Park, employs a traditional but mostly forgotten 'gleying' technique, mimicking a natural pond formation. The gleying process requires the pigs to mix layers of straw, manure, organic material, and clay to create a natural seal. After six weeks, the pond showed impressive water levels without the need for any manmade liners.

Nature Recovery Partnership

Goodwood has recently partnered with Weald to Waves, a community-led project to establish a 100-mile nature recovery corridor across Sussex. The 5km wide engagement area runs from Ashdown Forest across the South Downs to the sea. Connecting specialists with farmers, land managers, councils, researchers, wildlife charities, schools, gardeners and community groups, the scheme seeks to maximise the potential of even the smallest natural areas to boost biodiversity, capture carbon, enhance food production and enrich the rural economy. The estate now has the opportunity to access a wide range of nature recovery advisors and consultants; extend and improve relationships across the area and help support awareness for both large and small nature recovery projects.



Cetti's Warbler Nest



Trees

Goodwood Estate's Forestry department, in collaboration with Rolls-Royce Motor Cars, has completed the next phase of its tree planting initiative, to plant a total of 41,000 new trees by March 2024. The team primarily focused on introducing broadleaf whips, ranging from 60 to 90 cm in height. The diverse selection includes oak, field maple, birch, sweet chestnut, hornbeam, alder, and small-leaf lime. The scheme also includes 300 metres of hedging and a range of larger specimen trees across the wider estate. The planting runs just north of the South Downs National Park boundary, along New Road, from Halnaker to Lavant. It will also leave room for a new permissive path so that staff, residents and visitors will be able to walk between the villages safely.

With the help of Goodwood Staff and dedicated volunteer groups, such as Rolls-Royce Motor Cars and Chichester District Council, the estate has planted 177,550 new trees since 2019 (*fig.3 overleaf*).

The tree planting schemes at Goodwood have varied slightly from standardised forestry practice. The planting taking place along the Northern boundary of New Road is a vital part of an England Woodland Creation Offer (EWCO) project. The funding scheme requires 2,300 trees to be planted per hectare and that they are planted in a 2m x 2m formation. The estate has planted a further 3,700 trees per hectare due to planting without tubes or stakes. By planting this way, we account for the natural processes that might affect the growth of a tree such as deer damage, drought or pests and diseases, we are therefore, still able to retain the majority of the trees without installing non-biodegradable materials to do so. Over the year, we saved 27,600 plastic tree guards from being used.

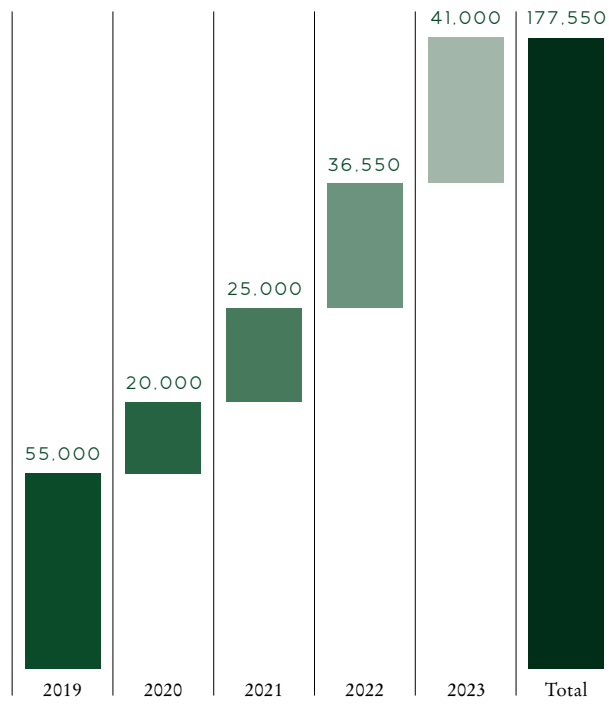
In March, Goodwood staff members supported the 'Great British Spring Clean' initiative, part of the national 'Keep Britain Tidy' campaign. The project focused on collecting old, disused tree guards from the forest floor.

We have completed our three-year hedgerow planting plan with just under 900m of hedgerow species planted in many areas of the estate, including Charlton, East Lavant, across Goodwood's golf courses and within the historic park.

Last autumn, Goodwood staff members harvested a variety of seeds from Goodwood trees which are being cultivated in a small nursery established at the Goodwood forestry yard, until they are mature enough to become part of the estate-wide planting scheme over the coming years. By using the seeds from the estate, we are taking advantage of the gene pool that has allowed the mother tree to survive and adapt, allowing us to produce resilient young trees.

The forestry department is losing an estimated 10% of newly planted trees to deer damage. A successful deer management trial in 2022, has resulted in a long-term plan for deer management across the estate for the coming years. Since the trial, the deer stalker has seen a huge improvement in the health of the deer population. The venison produced is used within Goodwood Home Farm Shop. In addition, an estimated 40% of trees aged between 10 and 15 years old within broadleaf plantations have been affected by ring barking, which is caused by non-native grey squirrels. Both issues represent a natural tension between wildlife and the associated habitats. To decrease the damage, a squirrel management trial was conducted across 40 hectares of land to understand the best method by which to control the population.

Tree Planting at Goodwood *(fg.3)*







Plants and Soil

Goodwood's gardens team was able to utilise a new wildflower seed harvester – acquired through the partnership with Rolls-Royce Motor Cars – to collect seeds from across the estate. These seeds will be used to create native wildflower meadows as part of the new Art Foundation situated at Hat Hill Copse on New Barn Road (formerly the site of the Cass Sculpture Park). Utilising a native seed mix adapted to the estate's climate and soil types will promote healthier growth and increase biodiversity, benefiting the area's honeybee population and aiding in disease resistance.

As part of our on-going work with One Carbon World, soil samples from Goodwood's Home Farm were analysed for carbon content. Optimum farming practices dictate that as much carbon is retained in the soil as possible, so we were very pleased that the farm's results were the highest ever seen by the agronomist. The average Organic Carbon Stock tends to measure at 50-120 tonnes per hectare (t/ha). Goodwood's highest score was 207t/ha with an average score of 100t/ha.

TWO

CARBON

Greenhouse gas (GHG) emissions are the main driver of human anthropogenic climate change. Goodwood recognises it is producing GHG emissions through the consumption of fossil fuels, both in estate operations and its world-class events, energy production and agricultural practices. The estate's long-term durability is dependent on limiting GHG emissions and mitigating the impact from changing climatic conditions. As a result, carbon is a critical sustainability priority and a major measure of the success of our strategy. Our interim goal is to become a net carbon neutral estate by 2030. From technological advances, to the movement of our visitors on site, we must consider all aspects of energy use. The installation of our biomass energy centre and solar panels means that we can generate our own renewable energy both at our world-class events and in daily estate operations. The use of electric vehicles, car charging points and carbon off-setting programmes have been integral to beginning the carbon neutral journey.

Emissions from event generators
REDUCED BY 87%
by switching to 100% HVO

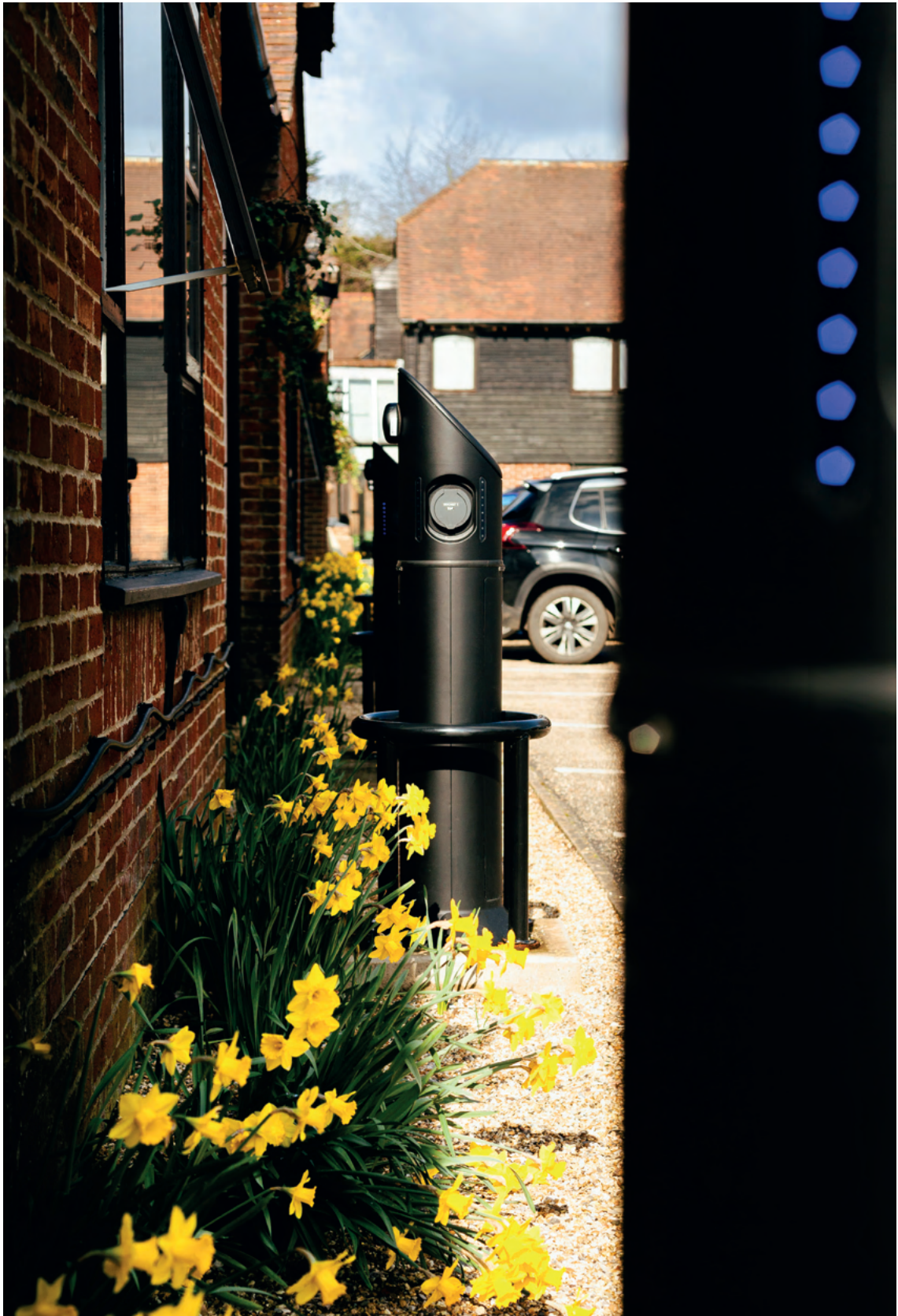
2,333 MWh
energy generated by the biomass

167,027 MWh
solar energy produced



5,575 HOURS
of charging time for electric vehicles

100%
electric fleet introduced to
The Goodwood Hotel



Estate Operations

We established our carbon footprint scope 1 and 2, and completed the SECR compliance documents for the 2022 financial accounts. The 2022 carbon numbers can be found in the table (fig.4) overleaf.

The onsite biomass centre produced 2,333 MWh of energy during the year which reduces the estate's CO₂ emissions by around 5,000 tonnes per year and allows the estate to be less reliant on the grid.

The table overleaf (fig.5) demonstrates how the introduction of the biomass system has impacted the consumption of heating oil at Goodwood House. 2020/21 are considered as anomalies due to the impact of the COVID-19 pandemic. 2022 was the biomass facilities first full year of operation and coincided with the return of business as usual for event and estate operations following the pandemic. We have seen a 92.7% decrease in heating oil consumption since 2018 (fig.5).

5,422 tonnes of woodchip fuel the boiler, a third of which has been supplied directly from Goodwood's own forests, with the remainder coming from neighbouring farms and estates within a 30-mile radius to support local businesses and reduce carbon emissions. In 2023, 5,800 straw bales used at Festival of Speed were also recycled into renewable energy at the biomass facility.

The 157kW of solar panels installed at the Motor Circuit produced 167.027 MWh of green electricity

in 2023, reducing our reliance on grid electricity and saving £45,097.

The solar panels at The Kennels generated 6.252 MWh, which is enough to power their fleet of electric golf buggies with more to spare.

The BP charging points were in their second year of operation since installation and the number of charges had doubled with total number of kilowatt hours used having increased by 67%. These charging points provide clients, visitors, and staff with the means with which to charge their vehicles without going offsite, reducing journey times, and increasing productivity and efficiency. This includes the now all-electric fleet of vehicles used by The Goodwood Hotel.

At the end of July, The Goodwood Hotel had new distribution boards fitted, allowing LED lights to be installed in all character rooms, the three main corridors, 91 guest rooms and the pool room. The few remaining rooms will have new LED fittings in 2024.

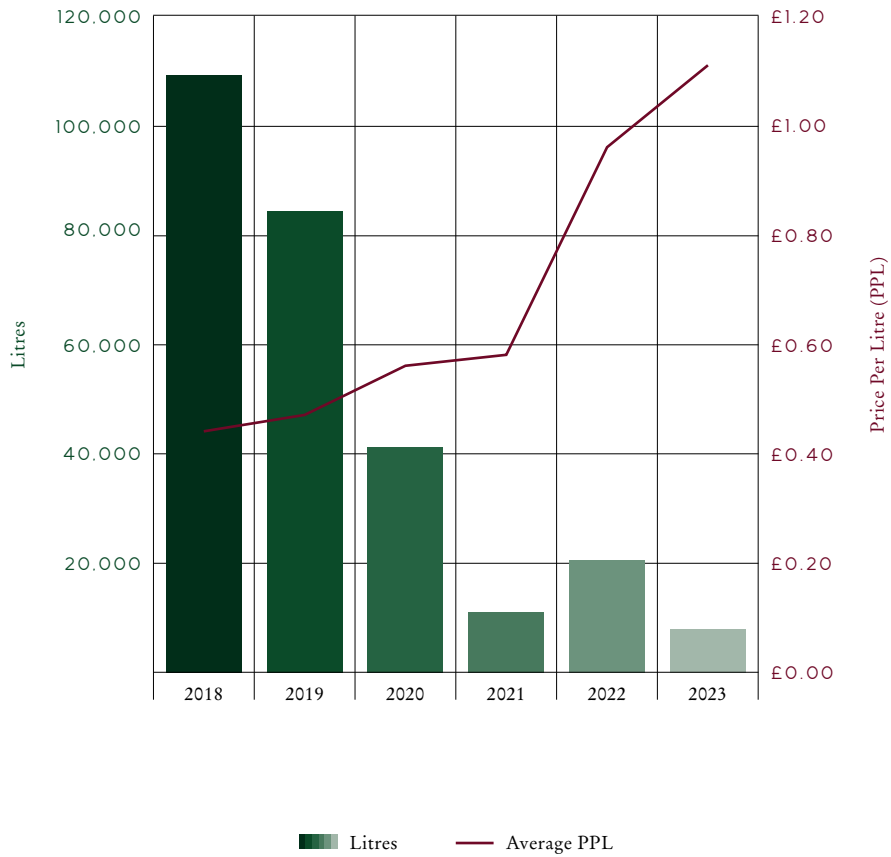
The Goodwood Hotel also procured a new laundry provider, allowing us not only to support a local business but also to reduce the miles travelled for the service by 90%.

The Goodwood Hotel and The Kennels have also enforced a policy that requires all fish and meat be purchased within a 25-mile radius, which will benefit local businesses and reduce associated emissions.

Streamlined Energy and Carbon Reporting (SECR)
 For the year ending 31 December 2021 and 2022
 (fg.4)

	2021	2022
Energy consumed (MWh)	5357	5574
Scope 1 and 2 emissions (tCO ₂ e)2 Uk Operations	5052	5840
Intensity Ratio (tCO ₂ e per £m revenue)	51.52	45.53

Reduction in use of heating oil at Goodwood House
 (due to biomass facility)
 (fig.5)





Events

The events team achieved their target to switch all event generators from non-renewable fuels to Hydrotreated Vegetable Oil (HVO) by 2023. Switching to HVO biodiesel has resulted in an 87% decrease in carbon emissions from event generators.

The graph (*fig.6 overleaf*) demonstrates the events' progression (2021-23) from red diesel to HVO, while the second graph (*fig.7 overleaf*) demonstrates the effect this change has had on event generator carbon emissions.

Festival of Speed continues to champion the future of mobility and automotive technology, with Electric Avenue, a curated exhibition of industry-leading launches to educate and inspire confidence in the technology.

The role of alternative fuels at Goodwood's headline motorsport events is rapidly evolving. In July, approximately 20% of the vehicles making a dynamic appearance at Festival of Speed ran on alternative fuels, whether hydrogen, electric or synthetic. Four-time Formula 1 World Champion and sustainability campaigner, Sebastian Vettel attended this year's event to promote the use of carbon neutral fuels. Then in September, Goodwood Revival's Fordwater Trophy saw 30 pre-66 Porsche 911s race on synthetic fuels, the first time a race like this had ever been held. A sustainable fuel panel discussion was held during the Revival, bringing together media and industry leaders to debate the role of these alternatives, including Porsche specialist, Richard Tuthill; Anders Hildebrand of the Anglo-American Oil Company, and five-time Le Mans winner and member of the FIA Drivers' Commission, Emanuele Pirro.

At Goodwood Revival 2023, just over 12% of all fuel used for racing, practice sessions and parade sessions was sustainable. The events team have implemented a strategy to increase the use of sustainable racing fuel to 75% in 2024. Similarly, at Members' Meeting, they are aiming to raise the percentage of sustainable racing fuels from 5% in 2023 to 30% in 2024.

Working with Tesla at the Festival of Speed and Polestar at Goodwood Revival to reduce the carbon emissions of our transport service, 30 electric vehicles were utilised to shuttle VIP guests from airports and train stations, and move visitors around the event sites.

As well as increasing our use of sustainable fuels we are also looking at ways to decrease total fuel requirements at the events. Aggreko, our temporary power provider, have supported this endeavour by introducing solar powered tower lights. In addition, during Goodwood Revival, Aggreko installed 14.5kW of panels in two locations across the site which generated an output of 1.349 MWh, equating to 279kgCO₂e saved. (Rensmart, no date)

Across all events, there has been a 25% increase (from the 2018 baseline) in the number of people using Stagecoach shuttle buses to get to Goodwood, reducing the overall carbon footprint of our visitors.

Goodwood's carbon offsetting scheme, introduced to our ticketing process in 2021, has enabled the forestry team to purchase and plant just over 10,000 trees over three years.

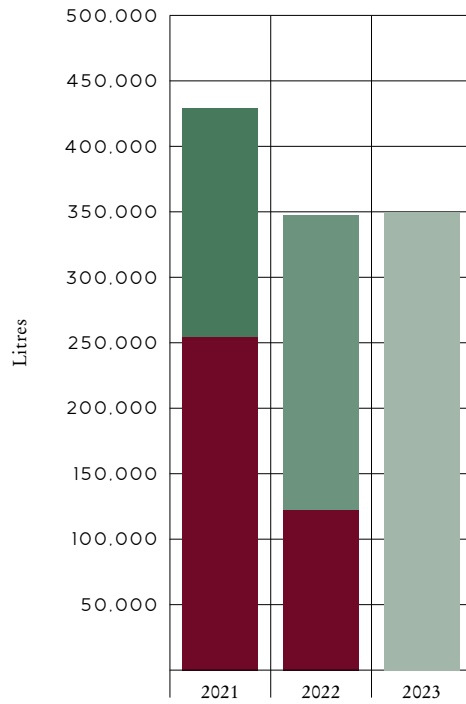
2023 saw the introduction of a new partnership with Train Hugger, the green ticketing platform, as the official rail ticketing partner for all motorsport events. For every rail ticket purchased for travel to and from Goodwood events, £1 of the £1.50 booking fee was donated towards the estate's sustainability and tree planting initiatives. 384 trees have been planted through this partnership to date.

An agreement with our new event water supplier enabled event equipment to be stored on site, decreasing time, fuel and mileage usually spent on transportation.

Our event catering partner, Levy, has banned all air freight transport for fruit and vegetable orders, and have switched their poultry procurement – including eggs – to a more sustainable scheme.

Event Generator Fuel

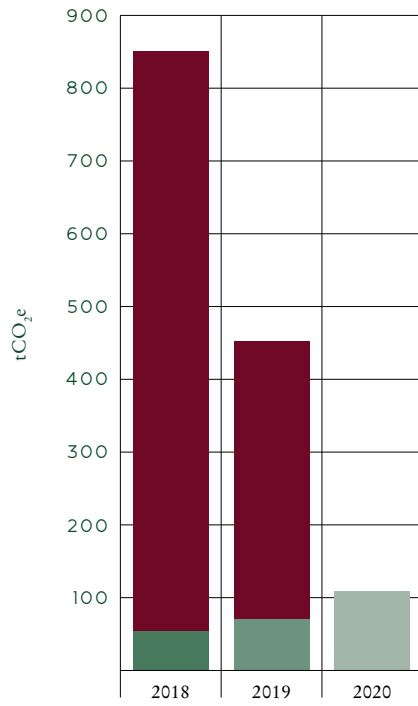
(fg.6)



■ HVO in generators ■ Red Diesel in generators

Event Generator Fuel Carbon Emissions

(fg.7)



■ HVO ■ Diesel

THREE

WATER

Water is a critical resource. Changing climatic conditions are affecting the availability of water, as well as our demand for water to manage our facilities and land. Today, 90% of our water provision is from our own ground water sources and we have made significant headway with the pipework repairs set out in the Water Strategy Masterplan in 2018.



1.6KM
of primary private network
supply replaced

1
pop-up irrigation system installed
at the racecourse

1
compost toilet installed

3
water butts installed



Estate Operations

Although 2023 was the planet's warmest year on record (C3S, 2024), the summer was recorded to be the 'UK's sixth wettest July on record.' (Press Office, 2023)

The graph overleaf (*fig.8*) shows the annual rainfall measured by the estate's rain gauge (situated within the golf grounds) over the past five years.

The increased rainfall reduced the pressure on the estate's boreholes, on which the northern area of the estate depends. With the business continuing to grow, it is crucial for the estate to employ and increase the use of water retention technologies.

The next phase of pipework repair across a 1.6km area is underway, starting with the renewal of a main trunk from the Molecomb borehole to the reservoir at Carné's Seat. A 'ladder' system has been designed for a more resilient network – if there is a leak in the future, it will allow for a section of pipework to be isolated and repaired without disrupting the supply of water to the reservoir. Pipework on the down service to Molecomb Stud and Dairy Cottages is also being replaced to eliminate leakage, which was highlighted as a priority in the Water Strategy Masterplan.

In addition to reduced leakage, investment in the water network has realised a considerable saving in electrical energy at the pumphouse. Aside from needing to pump less water due to reduced losses from leakage, the new pipe network has been redesigned to optimise flow, reducing turbulence, and improving the pump's energy efficiency.

During the winter, Goodwood Racecourse installed a new pop-up sprinkler system within the Parade

Ring to generate the same efficiencies as on the rest of the course, preventing the need to use the inefficient water gun method.

The farm has updated their milk cooling process to improve efficiency and reduce water waste. Water used to cool the milk is now collected in a tank to provide drinking water for the cattle or to aid with washing down of the milking parlour and collecting area.

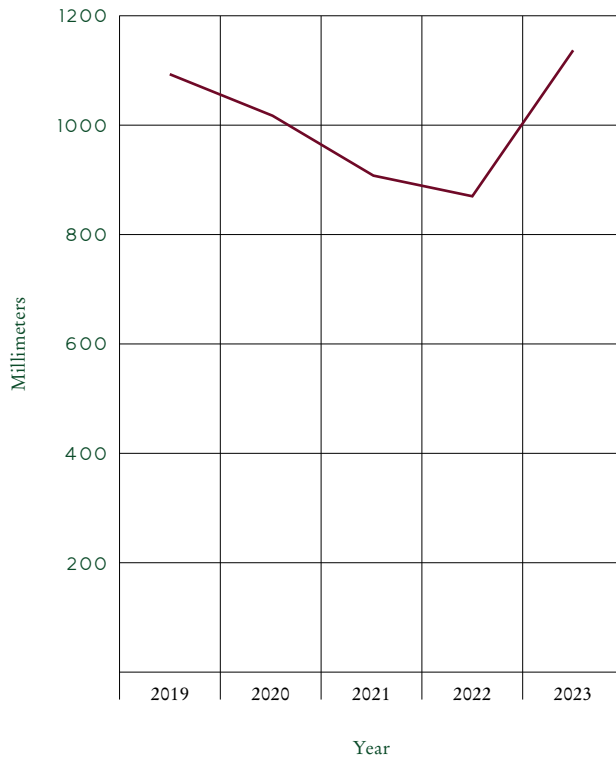
In March, The Park golf course announced the installation of an eco-friendly composting toilet, situated just beyond the 9th tee. It requires no electricity, drainage or water, and produces no chemicals, pollution or unpleasant smell.

Our Golf at Goodwood team now uses only recycled water to wash their machines and equipment and have raised the sprinkler heads on the course for more efficient watering.

The Goodwood Forestry team have installed rainwater harvesting on the buildings within the forestry yard, as have tenants across the estate. For example, at Manor Farm, water butts are capturing rainwater from the surface area of the farm house roof. The stored water will be used in the coming summers when water scarcity is likely, and will decrease overall water usage.

At our major events, the number of complimentary water fountains across the sites have increased to encourage the use of refillable water bottles, thereby reducing plastic waste and the delivery haulage of bottled water.

Rainfall at Goodwood (fg.8)





FOUR

BUSINESS

Goodwood not only generates revenue for the local economy, it works closely with its supply chain to support positive sustainability actions. Having developed and rolled-out a sustainable procurement code in 2021, Goodwood is focused on maximising local economic value and ensuring ethical and environmentally-sound provenance of goods and services. Our ambition is to embed sustainable practice and thought-processes into Goodwood's operations and culture.

Goodwood makes an estimated economic contribution of £323m annually into the local economy. This contribution increases to £444m at a national level, reflecting expenditure made by visitors, exhibitors, supplier (Grous 2023).

384

trees planted with Train Hugger partnership



67%

of event food used locally
sourced ingredients

50%

of event suppliers from within 50 miles

17

apprenticeships introduced across the estate
businesses



The Downs Golf Course voted

TOP 100

most sustainable golf courses in Europe

Economic contribution of

£323M

annually



Rolls-Royce Motor Cars Partnership

2023 marked the second year of Goodwood's collaboration with Rolls-Royce Motor Cars to preserve and enhance biodiversity across the estate, and support projects that benefit the local community's access to and enjoyment of the natural environment. To date, we have joined forces to deliver the major tree-planting scheme initiated in 2022; the collection of wildflower seeds for improved propagation onto suitable wild grassland; the preservation and enhancement of the estate's dormouse habitats; and the creation of ponds, which will benefit various species of wildlife. In addition to the sharing of skills and insights pertinent to the important environmental work, we have welcomed many team members from Rolls-Royce Motor Cars to facilitate the efficient delivery of this year's tasks.

Staff volunteers from Rolls-Royce Motor Cars helped to pot up oak saplings from acorns gathered on the estate, which helps to reduce the cost of purchasing new trees in the future, and ensures genetic suitability for the local environment. The same team also installed dormouse boxes in Goodwood's ancient woodland, which has allowed us to expand our monitoring area. A second group of volunteers collected seeds to restore Goodwood Forestry's establishing nursery. The seeds included a mix of beech, field maple, hawthorn, holm oak and sweet chestnut.

During the tree-planting season we also hosted volunteers from Rolls-Royce Motor Cars to assist with the planting efforts, working along the permissive path running from Halnaker to Lavant. A team of 40 people managed to plant an impressive 2,100 trees in under two hours.



Events

As a group, Goodwood records Net Promoter Scores (NPS), a metric used to measure customer loyalty, satisfaction, and enthusiasm, and thereby set targets for improvements in delivering exceptional experiences. The NPS for each event remain very high. Members' Meeting went up to +65 this year, and Goodwoof increased from +7 in its inaugural iteration last year, to +52. Unfortunately, 2023 saw high winds and heavy rain during the Festival of Speed weekend which had a negative impact on the NPS score for this event, however it still performs well at +39 and we are looking at operational improvements to support the customer experience during inclement weather.

Thanks to an ongoing partnership with official water supplier, South Downs Water, all Goodwood events now use 100% recycled PET water bottles where bottled water is necessary, as this delivers a lower carbon footprint than recycled aluminium cans.

A key priority for our event caterer, Levy, has been to promote the use of locally-sourced and plant-based ingredients across all events this year. This resulted in an average of 67% of food at all events having locally sourced ingredients, and 36% of all food being plant-based. In addition, all desserts are now plant-based and all menus use seasonal ingredients.

The Revive & Thrive 'celebration of second-hand' at this year's Revival expanded across two sites, with two programmes of hosted workshops, demonstrations, exhibitions and talks that inspired creatives ways to rethink, repair and re-wear, rather than discard time-worn belongings. This has also become the focus of the Revival social media content and a series of internal initiatives across the estate for a 365 contribution towards meaningful change.

This year, the Revive & Thrive Stage became a platform for discourse around sustainable fashion; how to source and properly care for pieces; the Vintage Style Not Vintage Values conversation, and how to make more sustainable sartorial statements, with the likes of Rosie Okotcha, Bianca Foley, Tiffanie Darke, Andrea Cheong, Sophie Benson, Samio Renelda, Amber Butchart and Dandy Wellington. The area also offered pre-owned luxury fashion in the Hardly Ever Worn It pop-up; a styling and renting masterclass with By Rotation; A Circular Story and The Marcon Court Project transforming vintage textiles into new pieces; visible mending with Rosie Brain Embroidery; knitting and crochet with Smithereens; Sashiko mending workshops with Great British Sewing Bee winner, Annie Phillips, and an on-the-spot repairs service for vintage garbs. Visitors also enjoyed various classes in the Sewing Atelier, where Nerrisa Pratt led a programme of mending and making tutorials.

A little further along the path on Hurricane Lawn, the Revive & Thrive Workshop played host to an incredible cast of experts in endangered and heritage crafts, led by TV's Dominic China and Micaela Sharp. From gilding and block printing to raffia hat making, leather repairs and painting furniture, a whole world of upcycling skills were showcased at the workbench. We also shone a light on apprenticeships in restoration with the Heritage Skills Academy, the brilliance of bicycles with TV's Tim Gunn and the endless creative potential of scrap modelling with The Rag & Bone Man.



On Estate

The 330-acre Newhouse Farm site – located in East Dean – previously farmed by a tenant for 60 years, has returned to Goodwood’s stewardship and is undergoing conversion to organic status, which completes in summer 2024. All farming operations on the Goodwood Estate are now exclusively managed by one family for the first time in at least a century. This is a great opportunity for Goodwood to maintain and restore the function of natural resources such as air, land, water and biodiversity across the land. Areas of the site will be set aside for nature recovery, with only low-intensity periodic grazing. This site has previously been used seasonally as a campsite and the estate hopes that a more nature-focussed environment will enhance the visitor experience.

The Property Team is investing in the reuse and repair of existing materials across the estate as an alternative to replacing time-worn elements with new. Residential properties – including Pilley Green, East Lavant Lodge and Manor Farm – have had windows and doors successfully repaired by a skilled carpenter, ensuring each property maintains its prominent historical characteristics and unique features as well as limiting waste.

The two cottages opposite The Goodwood Hotel are being restored and sensitively converted into holiday let properties. One of the main priorities of the project was to improve the energy efficiency within the cottages, which has been achieved by installing additional loft insulation, plaster boarding the walls and upgrading six windows from single to double glazing. Goodwood’s interior designer has ensured that the majority of furniture within the properties is second-hand and that where possible, existing furniture is restored.

At the top of Hat Hill, which leads northwards from The Goodwood Hotel towards East Dean, sit two Grade II listed flint properties known as the Pilley Green Lodges. Built in 1794 to the designs of James Wyatt, with knapped flint quoins on the corners and door surrounds faced in yellow brick, the lodges face each other across the road and boast the same Coade stones, displaying the build date and the Richmond Arms. During 2023, the lodge which remains in Goodwood’s ownership underwent significant restoration to restore its historic features and ensure it is fit for future generations. Work will continue on the coach house within the grounds in 2024.

This year, the estate repaired a total of 48 metres of flint walls, using the services of local expert flint workers.

The Motor Circuit has expanded its corporate experience offering with new guided pedal cycling tours, using both traditional bicycles and e-bikes.

The Downs Golf Course at Goodwood has been ranked within the top 100 most sustainable golf courses in Europe, recognized for their ecology efforts. The club was praised for its management strategy and in particular, changing rough areas to create a stronger, more diverse habitat. What was mostly thick ryegrass five years ago is now a tapestry of wildflowers and fine grasses, attracting more wildlife to the area.

In June, the Dispatch department switched courier provider from DPD to Royal Mail, which led to a financial saving of £280,000 per year. Going forward, 150,000 ticket orders dispatched per annum will be packed up in paper envelopes, saving 78,000 plastic bags previously used to courier orders.



Apprenticeships

The estate hosted 17 apprenticeships, all of whom are now employees or will transition into a role at the end of their apprenticeships. The roles included:

Mechanic
Hospitality Manager
Chef
Business Administrator
Operations / Department Manager
Painter / Decorator
Accounts / Finance
Hospitality Supervisor
Greenkeeper
HR Support

Goodwood hosts five chef apprenticeships each year from Chichester College for a six-week placement, during which they gain experience at the farm, the butchery and all of our restaurants. In addition, they enjoy workshops at a local baker, fishmonger, our brewery and Gusbourne, a local vineyard.

Through a Chichester College catering and hospitality initiative, the estate has seen over 100 hospitality students visit Goodwood for estate tours and a high volume of work experience placements. It is a great initiative, helping us grow our own hospitality teams for the future with local talent.

FIVE

SOCIAL

Goodwood plays a vital role in our local West Sussex community and our impact is also felt further afield. It remains a priority for us to be able to provide access to events and facilities to a diverse range of groups while also being a supportive client to local businesses and services. We carefully manage the impact of our yearly events; neighbours and tenants are continually engaged in the delivery plans where events may adversely impact their lives. It is estimated that 1 million people visit the estate annually, for the major festivals as well as weekly events and recreational pursuits, generating a significant economic impact on the local area. As Goodwood's audience continues to grow, so does our responsibility to those communities we reach and the ability to make a positive social impact.



3000

school children visited the
Goodwood Education Trust centre

£480,426
raised for charity

76%
event staff came from within
a 25-mile radius



1 MILE
of new permissive path opened from
Halnaker to Strettington

Launched
GOODWOOD MENTAL
HEALTH FIRST AIDERS
and
GOODWOOD
CONNECTED



Goodwood Education Trust

Founded by the 10th Duke of Richmond in 1976, the Goodwood Education Trust has provided outdoor learning opportunities to children and young people for almost 50 years.

The Trust offers children, young people, and some disadvantaged adults a range of workshops, engagement activities and practical hands-on experiences. Drawing on the unique woodland and farm here at Goodwood, the charity's objectives are to promote awareness and knowledge of the origins of food, sustainable agriculture, heritage and to inspire a love of the natural world. The Trust is an independent Charitable Incorporated Organisation (1198212).

Based in Seeley Copse – an eight-hectare remnant of semi-ancient woodland devoted entirely to education – the purpose-built accessible Education Centre is the most sustainable building on the Estate. Activities take place in the woodland and on the farm.

The Trust is accredited through CEVAS (Countryside Educational Visits Accreditation Scheme), an Educator member of LEAF (Linking Education and Farming) and a Forest School Association Recognised Forest School Provider.

School Visits – Farm and Forest

In 2023, 59 schools (a total of 1795 children) visited Home Farm for an educational experience, including

25 free class visits for children from disadvantaged areas. Over 12% of pupils were eligible for Free School Meals and 11.25% had Special Educational Needs.

The local Special School and the local unit of the statutory Alternative Provision College brought groups to Forest School each week, totalling 68 sessions.

The Trust hosted five residential trips for West Sussex maintained schools, catering to a total of 158 children. Of these, almost 16% were eligible for Free School Meals (above the West Sussex average) and almost 20% had Special Educational Needs.

200 students from 11 secondary schools were hosted for the STEM Seminars during Festival of Speed, giving students an insight into the world of design from leading industry experts.

The Trust partnered with Pallant House Gallery and South Downs National Park Authority to welcome 100 pupils from three local primary schools to explore the biodiversity of our natural world at Goodwood. As part of the Pallant House Gallery's contribution to the 'Wild Escape' project, groups enjoyed a guided woodland walk to find evidence of animals and insects, discovering which are at risk and what needs to be done to protect them. They created insect 'homes' and photographed their discoveries for an exhibition at Pallant House Gallery.

Children in the Community

This year, the Trust was a provider for the HAF2023 programme (Holiday, Activity and Food) for children eligible for means-tested Free School Meals, to enjoy holiday activities and a cooked lunch. 100% of the 72 places were allocated.

The ever popular Forest Adventures welcomed 304 children during the West Sussex school holidays.

The Trust delivered Family Fun Days for the charity Aspens, for children with autism and their families and siblings, on six weekends through Autumn and Winter. At the first session, Aspens staff said, “Today is about community and building friendships”. The Education Trust also funded a day of woodland activities to allow children supported by Young Carers to play with new friends and to have a break from caring responsibilities.

They also part-funded, co-designed, and ran an After-School Club for PACSO, a local charity supporting children with learning disabilities.

Adults in the Community

The Trust welcomed two groups of adults with learning disabilities, 60 in total, and both groups returned for a subsequent visit. One leader said, “I would like to thank you so much for our visit to your Education Centre, everyone that attended had a fantastic day”.

The Trust funded nine Forest Adventure sessions for people living with aphasia, a communication disability. The sessions were co-designed and delivered with Caroline Levitt from Diggers Forest School, herself a stroke survivor.

The Trust invited Think Out Community (TOC) which supports young adults with learning disabilities to visit the farm. As a result, the young adults will now be undertaking regular volunteering on the estate, supported by the Forestry Team, to make a meaningful and purposeful contribution to their local community and environment through coppicing and habitat creation.

Dementia Support (Sage House, Tangmere) is the Goodwood Estate Charity of the Year. The Trust funded and hosted three sessions for people living with dementia, carers and specifically male carers.



“We are extremely grateful for the support that Goodwood Festival of Speed has given to Greenpower Education Trust this year, and all the support that they have provided the charity since its inception. Thank you to everyone who so generously donated, enabling us to continue to make a difference.”

BARNABAS SHELBOURNE, CEO GREENPOWER EDUCATION TRUST



Estate Fundraising

A £101,475 was raised for The Greenpower Education Trust at Festival of Speed presented by Mastercard in July. The Fontwell-based charity inspires young people around the world to excel in science, technology, engineering, and maths through a unique challenge: to design, build and race an electric car.

The Goodwood Revival raised £64,674 for The Chichester Boys' Club, a total which will allow the valued city-centre facility to carry out essential repairs and refurbishment so that they can continue to provide help, support, and activities for local community groups.

At Goodwood Racecourse, the prestigious 2023 Markel Magnolia Cup raised a phenomenal £245,977 for Education Above All's 'Educate A Child' programme. This joint project with CAMFED in Malawi provides education and support for children most at risk of dropping out of primary education, aiming to empower thousands of girls to overcome barriers to accessing and remaining in school.

Pets as Therapy was the 2023 charity partner of Goodwood's newest event, Goodwoof presented by MARS Petcare. Visitors to the canine celebration helped to raise over £34,800 for this much-loved charity that enhances the health and wellbeing of thousands of people in communities across the UK, striving to ensure that everyone, no matter their circumstances, has access to the companionship of an animal.

Events throughout the year, from Breakfast Clubs and race days, to staff fund-raisers, resulted in an incredible £33,500 being raised for the estate charity partner, Sage House Dementia Support in the first

year of their two-year partnership. Sage House is a vital source of support in the local area to those living with dementia, their families, and carers. For one of the many fundraising events in the year, Goodwood Farm Shop donated Goodwood Gin and estate cheeses for a gin and cheese evening hosted at Sage House, and the farm shop manager hosted a fantastic talk about these products and their origins within Goodwood.

For the second year, Goodwood joined Children's BookFest's Feed the Mind initiative, and collected just over 100 books to donate as gifts for local children. Two in five children from disadvantaged backgrounds do not own a book of their own. Children's BookFest – a local organisation that brings together schools and authors in celebration of reading across a variety of interactive experiences – collaborates with the local foodbanks to ensure books are distributed to those children in time for Christmas.

The Goodwood Hotel has installed donation boxes within its changing room to allow members and guests the chance to donate hygiene products to My Sisters' House, a collective of women's centres serving the Arun and Chichester Districts. My Sisters' House provides a point of refuge for women, working with them to improve their welfare and wellbeing, reducing the risk of domestic abuse, and providing support towards recovery, education and employment.

In June, the estate exhibited at Wests Wood Fair, in the local village of East Dean, and hosted various fundraising activities in support of the Goodwood Education Trust. Just under £700 was raised over the course of two days.

Estate Fundraising
(fg.9)

Greenpower Education Trust	£101,475
Chichester Boys Club	£64,674
Markel Magnolia Cup	£245,977
Pets as Therapy	£34,800
Sage House Dementia Support	£33,500
Total Raised	£480,426





Community Projects

The estate opened the first phase of the new permissive path – a one mile stretch which connects Halnaker to Strettington – which when complete will run from Halnaker to Lavant, creating a vital connection for the local villages and public rights of way. The path runs through the middle of a 20-metre-wide rue of newly planted trees, and sits on the boundary of the South Downs National Park. It provides a safe passage for visitors and local residents to move between the local villages and around the estate, avoiding the need to walk on any dangerous roads. Once the project is complete, it will also link together the wildlife corridor heading north from Chichester Harbour, an Area of Outstanding Natural Beauty, to the South Downs National Park. The scheme aims to enhance the south of the estate for the benefit of both wildlife and the local community.

Earlier in the year, a Ukrainian family moved into a two-bedroom property on the estate, having been forced to leave their home due to the conflict. Goodwood staff donated furniture, clothes, and other household essentials so that the home was up and running as soon as they arrived. The only son of the family has now started Year 5 at a local school, where he is doing well and has made good friends. His parents have both found jobs in the local area and have enrolled in English classes at Chichester College. The mother was a teacher in the Ukraine and is hoping to help other Ukrainians with their English in the UK.

The historic Trundle, a scheduled ancient monument with deep roots in the history of West Sussex, has faced a significant increase in footfall in recent years, leading to substantial degradation. In a bid to preserve this invaluable site, the estate, with support of Rolls-Royce Motor Cars are taking measures to protect the

monument's ramparts by installing a sacrificial layer. A small 10-metre chalk trial patch was installed in August through minimally invasive methods, with plans to expand the effort to the remaining areas of damage over the coming years after assessing its effectiveness with the support of Historic England.

Rob Dyer, Head Grounds Keeper of the Downs Golf Course, led ecology walks for the Lavant Environmental Team to allow for a better understanding of what the Golf teams at Goodwood are trying to achieve, and share knowledge where possible.

Daffodils grown around the Motor Circuit in time for Members' Meeting were donated to local villages and replanted around the estate.

Goodwood has been working with the Lavant History Project team to refurbish a K6 Telephone Kiosk in the village, so it may be better utilised and enjoyed by villagers and those visiting. The kiosk was very carefully moved from its location in East Lavant village to a specialist for full refurbishment, before being brought back and re-sited at Lavant Memorial Hall. It now awaits the final phase – the introduction of an information board about the village and its connection to the Goodwood Estate.

At Goodwoof, students from the Alternative Provision College – providing full-time education for those who have been excluded from mainstream school – staffed an exhibitor space. We worked with them to design and market a range of dog-related products for sale throughout the event weekend.

Following advice from the local South Downs National Park ranger, the estate has temporarily diverted a public bridleway at Newhouse Farm due to the risks posed by trees severely affected by ash dieback. The necessary tree works to make the area

safe are scheduled to take place in 2024 so that the original bridleway can be reinstated.

The estate employed nearly 1,150 temporary event staff, and an additional 600 volunteers, during the event season, 76% of these people came from within a 25-mile radius of the estate.

In keeping with Goodwood Revival's Revive and Thrive ethos of rethinking, repairing, and re-wearing second-hand belongings, we have repurposed two of our iconic red phone boxes into Book Swap facilities at the Motor Circuit. Goodwood staff donated pre-loved books to get the initiative started but it has since been opened to the public.

We also hosted two second-hand clothes sales for Goodwood Staff, to help everyone shop in a more circular and affordable way. Alongside Goodwood staff stalls were two local pre-loved retailers, Re:Dress and Willow & Eve Preloved, and charity shop pop-ups by St Wilfrid's Hospice and Dementia Support.





Staff Welfare

One Goodwood has implemented a group of Mental Health First Aiders, members of staff who have been trained specifically to help support Goodwood colleagues with any issues that one might face, whether that be related to work or to home life.

A further social initiative, 'Goodwood Connected' was introduced to offer a regular opportunity for Goodwood staff to get to know each other through relaxed, curated networking events. The group encourages representatives from every team across the estate to come together for 90 mins of informal conversation.

The Goodwood Diversity, Equity and Inclusion Steering Group have been focussed on delivering a strategy for improvement around training, recruitment, and customer experience. We look at the best practice of industry peers, review where we could improve the experience of both customers and staff, and work across several short term and long-term goals to that end. This year, over 200 staff members attended training in anti-racism,

unconscious bias in recruitment and British Sign Language (BSL). We also formed a safeguarding masterplan for our events, catering to a diverse variety of needs with sensitive consideration of the nuanced experiences of marginalised identities. We introduced BSL interpreters to Revival's programme of talks; conducted an audit of offices and the staff welcome pack for disabled employees; and improved the support for staff with dyslexia. We have also launched a campaign for staff to report and gain support around incidences of discriminatory language or behaviour, with the view to rolling this out for event customers in time.

One Goodwood's Wellbeing Programme continues to support our staff with their mental and physical health. As well as fitness classes, the programme offers expert advice on gut health, sleep hygiene and stress resilience. Classes have included boxercise, burn 500, sound bathing, yoga, spin: the movies, dance parties and seasonal walks.

SIX

RESOURCES AND WASTE

In our day-to-day operations and during events, it's crucial for us to track the destination of our waste after it leaves the site. This helps us gain insights into reducing overall waste levels. We're tackling this by collaborating closely with our waste contractors and implementing proactive measures to promote recycling and reuse of materials, extending their lifecycle. Enhanced transparency regarding this lifecycle will inform our procurement and disposal choices, ultimately adding value to materials. Additionally, whenever feasible, we donate waste products to the local community if they can benefit a particular group or individual.

Renewable cup scheme saved

900,000

single use plastic cups

250KG

event food waste donated to UK harvest



200 TONNES

of estate waste converted to compost
for onsite use

1.082 TCO₂E

saved through WEEE recycling

48

toner cartridges recycled



On Estate

The estate recycled 330kg of Waste from Electronic and Electrical Equipment (WEEE) saving 1.082 tCO₂e.

Introduced in 2023, Make it Happen is a Goodwood project group offering a brilliant opportunity to work across all business areas, dealing with new teams and colleagues whilst streamlining Goodwood's processes, whether it be administrative, cultural or technology focused. The project's first year saw the introduction of a toner cartridge recycling scheme which has seen 48 toner cartridges recycled so far.

The estate recycled over 17.6 tonnes of food waste into renewable energy and bio fertiliser via our waste contractors. Responsibly removing the waste from our restaurants and cafés vastly reduces methane gas production.

Working closely with our waste supplier, the estate has saved 158 tonnes of CO₂ across all waste streams, which equates to 546 trees being planted.

The farm installed a new pump and holding tank at our cheese-processing facility to harvest the whey, a byproduct of the production process. Previously a waste product, the whey is now repurposed as a palatable, high-protein food for the pigs.

At The Goodwood Hotel, all in-room toiletries are now Elemental Herbology products, which are 100% free from artificial colours, SLS, paraben preservatives

and mineral oils. Elemental Herbology only uses 100% recycled RPET bottles and dispensers. All standard rooms have large refillable bottles in place, and the Suites, Character Rooms and Garden Rooms have individual 40ml bottles still in place but these and the refillable bottles are all made of 100% recycled RPET and can be recycled. All public facilities also have large refillable bottles in place, and Goodwood Health Club has introduced reusable facial pads instead of cotton pads for clients to use.

At our clay shoot venue, traditional clays have been replaced with sustainable clays made from recycled wood pulp and dissolvable glue.

The Goodwood Education Trust introduced a Welly Collection initiative, repurposing second-hand wellington boots to enable school children from urban schools to be able to explore the woodland safely and without damaging their own footwear.

The estate is now using mulch cuttings and green waste collected over the last 2 years as compost; 200 tonnes of waste produced on the estate is now being reused rather than being transported offsite.

The forestry team used waste wood chip generated by tree felling across the estate to spread mulch around the larger trees in the historic park, this ensures that the mycelium and nutrients are returned to the ground.



Events

To improve front of house waste management on event, we are now engaging the public in our efforts with a recycling programme designed to reduce the amount of general waste produced. For example, by introducing the reusable cup scheme, we have avoided over 900,000 single use plastics.

In addition to recycling waste straw bales and chestnut stakes after Festival of Speed as a feedstock for the biomass energy system, our event partners have been able to support our energy generation – Ford provided 3.9 tonnes of woodchip from their exhibition stand show floor to be recycled into fuel.

Unfortunately, due to adverse weather conditions, the Saturday of Festival of Speed was cancelled for the first time in its 30-year history. As a result, our event caterers Levy donated over 250kg of food to UK Harvest.

2024 AND BEYOND

Goodwood has already established a series of new projects for 2024, driven by our overarching sustainability strategy. We are delighted to share a taster of what is to come over the next 12 months:

Goodwood is proud to announce that the 2024 Revival event will serve as a landmark moment in motorsport history, as the entire weekend of historic racing is set to take place exclusively using sustainable racing fuel. Already an event that champions second-hand sustainability, this initiative sees Goodwood Revival further extend its Revive & Thrive ethos with sustainable racing fuel ensuring the future of classic combustion engine cars. Goodwood will require competitors to use a fuel which has a minimum of 70% advanced sustainable components, in accordance with the FIA's current requirements for sustainable fuel. Serving as a drop-in fuel, no modification is required to the cars and there is no compromise on race performance. In fact, Goodwood's first sustainably-fuelled winner came in the Rudge-Whitworth Cup at the 2023 Revival, as the 1925 Bentley Speed Model with the driver pairing of Ben Collings and Gareth Graham crossed the line ahead of competitors running on standard fuel.

In 2024, Goodwood Home Farm dairy will introduce a new robotic milking system designed to improve efficiencies and animal welfare. The project will also include the installation of photovoltaics on the roof to generate renewable energy. Additional solar panelling is being investigated for Redvins Barn, the site of the Biomass energy facility.

Sensitive and sustainable woodland restoration of the Hathill Copse site (formerly the Cass Sculpture Park) and the Coach House property restoration will commence in 2024.

The Kennels' effluent waste will be redirected from the existing septic tank to a new Bio-Bubble wastewater system, allowing nutrients to be reused.

The estate is due to begin a pond restoration project at Home Farm. This will serve as great natural teaching platform for the Goodwood Education Trust as well as providing a contrast between the green and blue space that will positively impact mental wellbeing. The pond was previously a small-scale reservoir holding water taken from a disused borehole. It will be filled using rain water harvested from Home Farm's lambing shed roof.

Work will continue to extend the permissive path network in 2024, allowing more people to enjoy the natural beauty of the Goodwood Estate.

The estate is collaborating with West Dean and the Arun and Rother Rivers Trust (ARRT) on a management plan for the River Lavant, with a focus on improving the health of the waterway through habitat enhancement, and nature-based solutions to flooding and pollutants.

NATURAL CAPITAL

The resources and natural environmental assets of the estate, including plant and animal life.

4452 HECTARES

of estate land

92%

of the estate is in the South Downs National Park



44%

of the estate is forestry



36%

of the estate is farmland

SSSI

3 Sites of Special Scientific Interest

77 HECTARES

dedicated entirely to rewilding and nature recovery

CARBON

The measurement of our carbon footprint, our use of green energy and alternative sustainable fuels.

2

Biomass Energy Centres

157 KW

of solar panels on the estate

16

estate buildings powered by estate-generated electricity



11

electric car charging points

100%

green tariff for grid electricity

100%

of biomass fuel from within 25-mile radius of the estate

WATER

The sustainable management of water across the estate, including boreholes and aquifers, as well as management of our manmade supply and irrigation system.



15 KM

network of private water supply pipes

3

operational bore holes

2

potable water reservoirs

21%

of the private water network replaced/upgraded since 2018

2.1 MILES

winterbourne chalk stream (River Lavant)



16

ponds and scrapes

BUSINESS

Proactive decisions, partnerships and improvements made by Goodwood, including management of supply chains, procurement and internal relationships.

Portfolio of
29
Goodwood businesses

35,000
members of Goodwood Clubs

107
commercial event partnerships



10
leisure and recreation venues



7
sports venues

24
local businesses as
commercial tenants

SOCIAL

Initiatives and the impact that Goodwood has directly on its people, the local community, charities and local educational projects.

1 MILLION
visitors to the estate each year

4100
permanent and seasonal staff
employed by Goodwood

137
homes for estate tenants

46 MILES
of public access on
pathways and tracks

Heritage stewardship of
**56 LISTED
BUILDINGS**
and
**17 SCHEDULED
ANCIENT
MONUMENTS**



Home to the Goodwood
Education Trust since
1976

RESOURCES & WASTE

Resource management and creative ways to prolong the life cycle of materials in use.

1
onsite recycling centre



6
large clamps made for composting
all the estate's green waste

**SEGREGATED
WASTE BIN
SYSTEM**
across all Goodwood offices

**BIOMASS
FACILITY**
to turn waste wood and straw
bales into usable energy

DEDICATED WEEE
(Waste Electric and Electronic
Equipment) recycling scheme

ISO20121
sustainability accreditation
for all major events



References

C3S (2024)

'Copernicus: 2023 is the hottest year on record, with global temperatures close to the 1.5°C limit.'

Copernicus.

Available at: climate.copernicus.eu/copernicus-2023-hottest-year-record

Grous (2023)

'The Goodwood Estate Socioeconomic Contribution: 2022'

Goodwood Estate. Unpublished.

Rensmart (no date)

'Carbon emissions calculator'

Available at: rensmart.com/Calculators/KWH-to-CO2 (accessed 22.02.23)

Press Office (2023)

'Mixed conditions bring warm and wet summer for the UK.'

Available at: [metoffice.gov.uk/about-us/press-office/news/weather-and-climate/2023/summer2023ukweather#:~:text=However%2C%20despite%20above%20average%20temperatures,summer%202023%20is%20the%20wettest%20](https://www.metoffice.gov.uk/about-us/press-office/news/weather-and-climate/2023/summer2023ukweather#:~:text=However%2C%20despite%20above%20average%20temperatures,summer%202023%20is%20the%20wettest%20) (accessed 22.02.23)

the%20wettest%20 (accessed 2022.02.23)



—